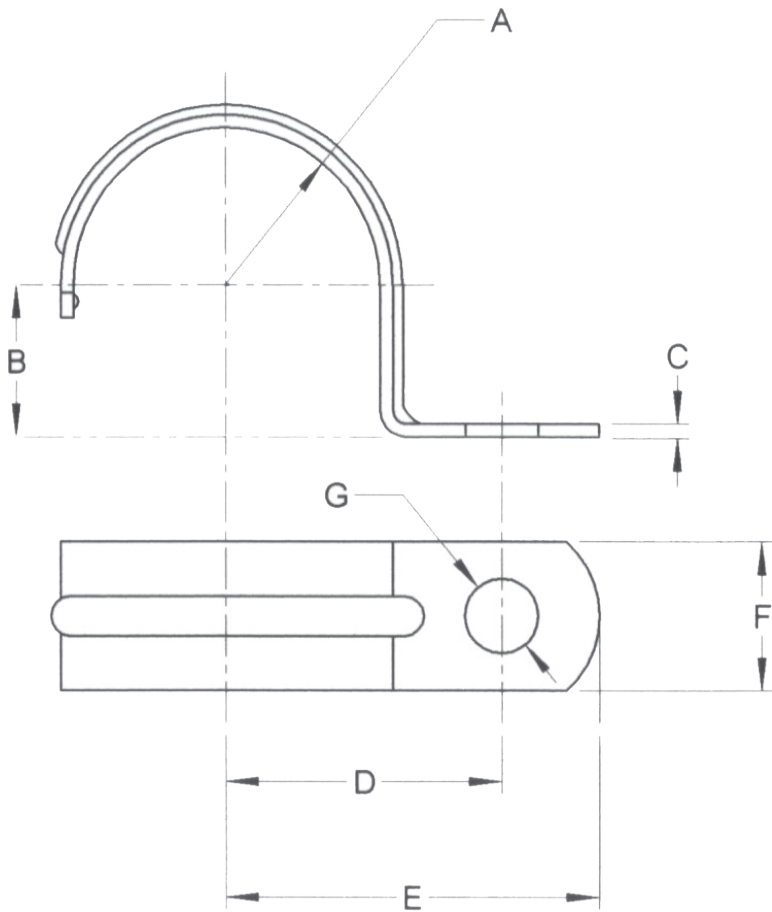


	ITEM NO.	SIZE	A	B	C	D	E	F	G
*	7544	1/2	.350	.320	.057-.065	.937	1.250	.562	.250
*	7545	3/4	.460	.425	.065-.073	1.060	1.375	.625	.250
*	14839	1	.580	.550	.075-.080	1.250	1.562	.875	.312
	14840	1-1/4	.750	.715	.085-.095	1.500	2.000	.875	.375
	14841	1-1/2	.870	.825	.085-.095	1.687	2.125	1.000	.375
	14842	2	1.100	1.050	.098-.110	2.000	2.625	1.125	.437



MATERIAL: C-1008 STEEL

FINISH: ZINC PLATING

*** UL LISTED: FILE NO. E186443**



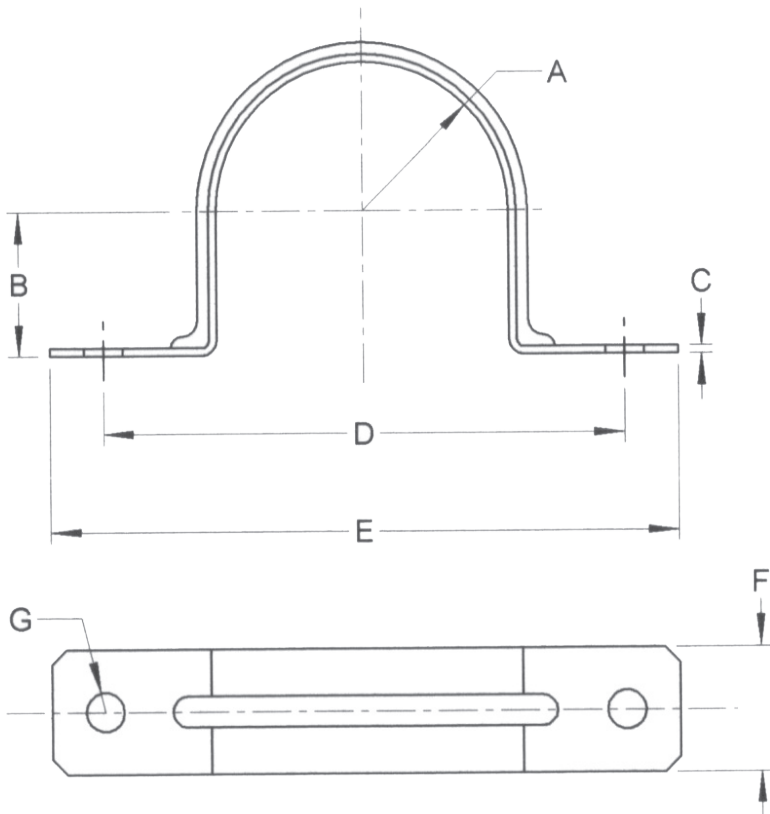
REVISIONS

UPDATED ITEM NUMBERS 01-2024
cUL LISTING ADDED 03-2008
CSA REMOVED 03-2008
THICKNESS TOLERANCE 01-2006
REDRAWN 01-2006

1 HOLE E.M.T. STRAPS

DATE: 08-27-1997

ITEM NO.	SIZE	A	B	C	D	E	F	G
14850	1/2	.35	.32	.028-.032	1.56	2.00	.50	.188
14851	3/4	.46	.42	.028-.032	2.00	2.43	.56	.188
14852	1	.58	.55	.028-.032	2.24	2.68	.62	.188
14853	1-1/4	.75	.71	.033-.038	2.75	3.50	.75	.250
14854	1-1/2	.87	.82	.033-.038	3.32	4.12	.87	.250
14855	2	1.10	1.05	.043-.050	3.87	4.75	1.00	.375



MATERIAL: G-60 STEEL OR EQUIVALENT

UL LISTED: FILE NO. E 186443



REVISIONS

UPDATED ITEM NUMBERS 01-2024
cUL LISTING ADDED 03-2008
CSA REMOVED 03-2008
THICKNESS TOLERANCE 01-2006
REDRAWN 01-2006

2 HOLE E.M.T. STRAPS

DATE: 08-27-1997