



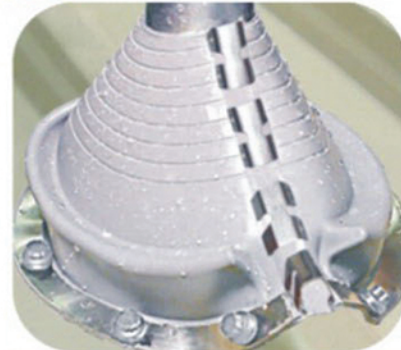
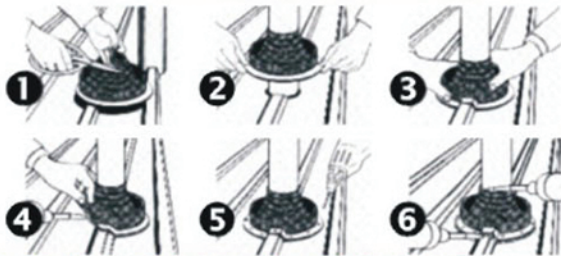
# SPRING SEAL™ ROUND BASE PIPE FLASHINGS

<http://www.onspring.biz>

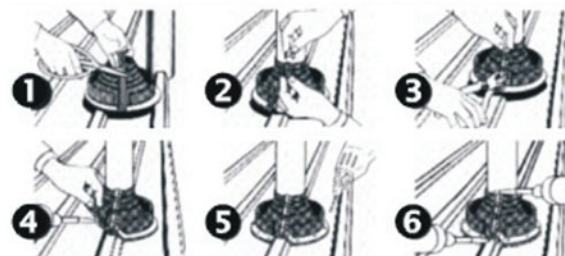
**20 Years Guaranteed**



**STANDARD CLOSED TYPE**



**ZIP-SEAL™ (RETROFIT) OPEN TYPE**



## MATERIAL SPECIFICATIONS PER ASTM-D 2000 UL 94 Approved

| Material     | Temperature Range                 | Applicable Specifications  |
|--------------|-----------------------------------|--|
| EPDM(black)  | -60° to +115° C (-76° to +239° F) | M3 BA510, A14, B13, C12, F17, Z1, Z2, Z3, Z4, Z5, Z6, Z7, UL-94 HB |
| EPDM(gray)   | -60° to +115° C (-76° to +239° F) | M2 BA507, C12, F17, Z1, Z2, Z3, Z4, Z5, Z6, Z7, UL-94 HB           |
| Red Silicone | -60° to +200° C (-76° to +392° F) | M4 GE505, A19, B37, C12, F19, G11, Z1, Z2, Z3, Z4, UL-94 HB        |

## SPRING SEAL™ FLEXIBLE PIPE FLASHING RANGE

### STANDARD ROUND BASE

| Code no. | N.W.      | Alum. Base O.D. | PIPE RANGE (INCH/MM)         | Packing   |
|----------|-----------|-----------------|------------------------------|-----------|
| SPF#1    | 0.07kg/pc | 4-3/4" (120mm)  | 1/4" to 2" (6-50mm)          | 15pcs/box |
| SPF#2    | 0.14kg/pc | 6-1/4" (160mm)  | 1-5/8" to 3-1/4" (40-83mm)   | 15pcs/box |
| SPF#3    | 0.18kg/pc | 7-3/4" (195mm)  | 1/4" to 5" (6-127mm)         | 15pcs/box |
| SPF#4    | 0.29kg/pc | 9-1/4" (235mm)  | 3" to 6-1/4" (75-160mm)      | 15pcs/box |
| SPF#5    | 0.30kg/pc | 10-3/4" (275mm) | 4-1/4" to 7-1/2" (108-190mm) | 15pcs/box |
| SPF#6    | 0.52kg/pc | 12-1/2" (320mm) | 5" to 9" (125-230mm)         | 10pcs/box |
| SPF#7    | 0.66kg/pc | 14-1/2" (370mm) | 6" to 11" (150-280mm)        | 10pcs/box |
| SPF#8    | 0.84kg/pc | 16-1/2" (420mm) | 7" to 13" (175-330mm)        | 10pcs/box |
| SPF#9    | 2.20kg/pc | 25-1/2" (655mm) | 10" to 19" (255-483mm)       | 5pcs/box  |

### ZIP-SEAL™ (RETROFIT) ROUND BASE PATENT PENDING

| Code no.                | N.W.      | Alum. Base O.D. | PIPE RANGE (INCH/MM)      | Packing   |
|-------------------------|-----------|-----------------|---------------------------|-----------|
| ZP-RD-1(W/5 S.S. Clips) | 0.15kg/pc | 6-1/4" (160mm)  | 3/4" to 2-3/4" (20-70mm)  | 15pcs/box |
| ZP-RD-2(W/6 S.S. Clips) | 0.20kg/pc | 7-3/4" (195mm)  | 3/8" to 4-1/2" (10-115mm) | 15pcs/box |
| ZP-RD-3(W/7 S.S. Clips) | 0.42kg/pc | 10-3/4" (275mm) | 2" to 7-1/4" (50-185mm)   | 15pcs/box |
| ZP-RD-4(W/9 S.S. Clips) | 0.70kg/pc | 14-1/2" (370mm) | 3-1/4" to 10" (85-255mm)  | 10pcs/box |

Note: On roofs with pitch greater than 20 select the next larger size of Spring Seal™ flashing to accommodate the steep angle.  
For square pipes multiply the square dimensions by a factor of 1.3 to select the correct flashing.