

Compact

THERMAL IMAGING CAMERA
DESIGNED FOR YOUR SMARTPHONE

KEY CAMERA SPECS

- 206 x 156 Thermal Sensor
- 36° Field of View
- 40°F to 626°F Detection Range
- 1,000 ft Distance
- Works Day & Night
- Waterproof Carrying Case

Seek[™]
thermal

thermal.com



Designed to work with both iPhone and Android top models, Seek Compact is the ideal quick connect-and-detect thermal imaging device. Highly portable and easy to carry, it combines powerful thermal imaging with a 206x156 sensor, and a 36-degree wide field of view lens for optimal results, especially indoors. Using its adjustable focus, it can detect anywhere from just a few inches to 1,000 feet away. It does not require a battery or charging. Seek Compact uses advanced infrared technology to let you see thermal images in day or night right on your smartphone screen. It even comes with its own waterproof carrying case.

Designed and Manufactured in Santa Barbara, California with Global Components.

Product Name:	Seek Compact
Available Date:	September 2014
Product Type:	Thermal Imaging Camera Made for Smartphones
Seek Compact Made for iPhone:	UPC: 855753005143 Part Number: LW-AAA
Seek Compact Made for Android:	UPC: 855753005136 Part Number: UW-AAA
Export Regulations	Subject to US Export Regulations

Single Unit	
Included in the box:	<ul style="list-style-type: none">Seek CompactWaterproof Carrying Case
Device Dimensions (H x W x D)	1 x 1.75 x .8 inches
Device Weight:	.5 ounces
Box Dimensions (H x W x D)	7 x 3.75 x 1.25 inches
Box Weight:	8.3 ounces
Master Pack	
Included in the Master Pack	80 Units
Master Pack Dimensions	20 x 15 x 16 inches
Master Pack Weight	45 pounds

KEY FEATURES

Easy to Use Indoor Versatility

Wide, 36° field of view quickly scans the inside of any room

High-Performance Thermal Sensor

206 x 156 thermal sensor accurately identifies areas of heat loss and gain

Best in Class Temperature Range

Measure temperatures from -40° to 626°F (-40° to 330°C)

Customize, Record and Share

Intuitive, free mobile app available on Google Play and iTunes App Store

Focusable Lens for Quick Identification

Aim and focus from 6 inches to 1,000 feet (300 meters) for the sharpest image

Waterproof Case that Protects

Comes with its own waterproof case to withstand the elements

BENEFITS & USES

Connect-and-Detect Convenience

Pocket-sized, highly portable, and easy to use

Easily Monitor Home and Building Efficiency

Quickly spot energy loss and HVAC issues

Accurately Inspect Mechanical and Electrical Equipment

Diagnose and assess the problem source quickly

Work Smarter

Be more efficient by utilizing the power of your smartphone

Time of Day Won't Slow You Down

Safely examine any job site in daylight or total darkness

Easily Document and Share

Record images and video of home inspections for easy documentation

TECHNICAL SUMMARY

SPECIFICATIONS	DESCRIPTION
Thermal Sensor	206 x 156
Detection Distance	1,000 Feet (330 Yards, 300 Meters)
Field of View	36 Degree FOV
Temperature Range	-40°F to 626°F (-40°C to 330°C)
Frame Rate	< 9 Hz
Focus	Adjustable Focus
Lens Material	Chalcogenide
Microbolometer	Vanadium Oxide
Pixel Pitch	12 Microns
Spectral Range	7.5 - 14 Microns
User Interface	Free Seek Thermal Mobile App
Temp. Display Scale	Fahrenheit or Celsius
Color Palettes	9 Options
Storage Media	Stores Directly to Smartphone
Battery	Powered by Smartphone. Consumes up to 280 mW
Phone Compatibility	iPhone® and Android™

For support and user guides visit support.thermal.com

KEY SPECIFICATIONS

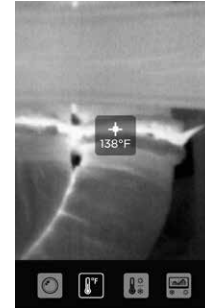
206 X 156 Thermal Sensor	36° Field of View	-40 to 626°F Detection Range	1,000 ft Distance	Waterproof Carrying Case
--------------------------	-------------------	------------------------------	-------------------	--------------------------

USER INTERFACE



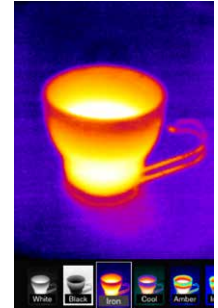
PHOTO & VIDEO

Capture and share thermal photos and videos



THERMOGRAPHY

Display temperature readings in three modes: Spot, Hi/Low, & Threshold



COLOR PALETTES

Customize your experience with a variety of color palettes

DEVICE COMPATIBILITY

Available for iPhone® and Android®
Compatible with top smartphones and tablets

▶ See list of compatible devices at thermal.com/supported

SEEK THERMAL APP & SOFTWARE

The free Seek Thermal app allows you to customize your experience, record images and videos directly to your smartphone, and easily share them.

▶ Get started at thermal.com



PRODUCT ASSETS



Engaging POP



Product Videos



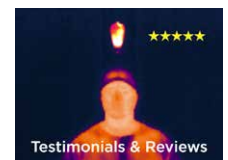
Instructional Videos



Thermal Photography



Product Photography



Testimonials & Reviews

Seek more at thermal.com

111 Castilian Drive, Santa Barbara, CA 93117 USA

Seek Thermal engineers, designs and manufacturers high quality thermal imaging products and core platforms for consumer, commercial, and heat sensing IoT data applications. With headquarters in Santa Barbara, California, the global hub of thermal imaging innovation, the company has developed breakthrough thermal imaging camera cores that will enable a range of affordable products for use at home, work and play. For more information visit thermal.com and follow #seekthermal on Instagram and @seekthermal on Twitter.



Compact Series User Manual

(for Apple and Android devices)



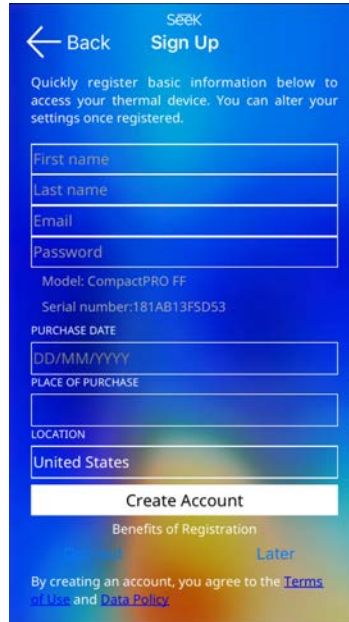
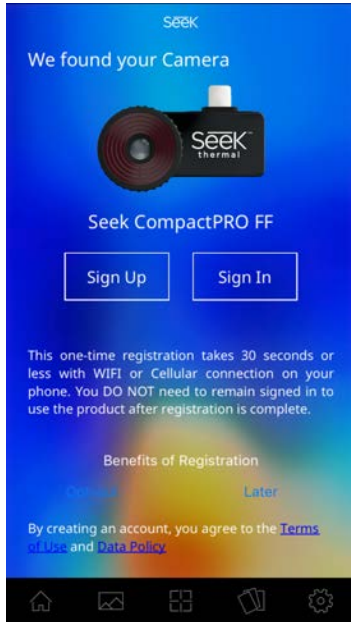
Welcome to the official Seek Thermal App! Let's take a few minutes to quickly walk through the basics of the App and learn how to use your Device.

Registration

Why Register?

We want you to have a great experience with your Seek product. By sharing your name, email, and serial number, you enable us to send you product updates and tips and techniques. We can also expedite your warranty inquiries by knowing when and where you purchased. Country information helps us to provide better local product support.

Registration is not required and you may choose to "Opt Out"

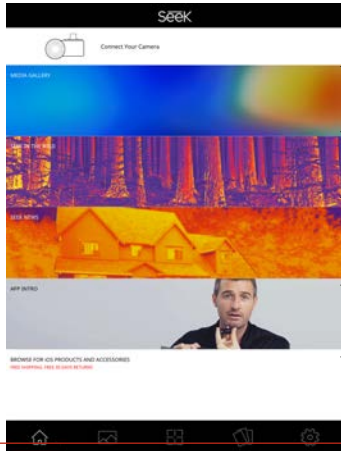


First Time Registration:

This one-time registration takes 30 seconds or less with WIFI or Cellular connection on your phone. You DO NOT need to remain signed in to use the product after registration is complete.

To read our data policy visit:

www.thermal.com/datapolicy



– **CAMERA TYPE INDICATOR:** Shows which type of thermal camera you have connected.

– **MEDIA GALLERY:** Here you will find all your photos & videos.

– **SEEK IN THE WILD:** See thermal images from the Seek community.

– **SEEK NEWS:** Read the latest articles featuring Seek Thermal.

– **APP INTRO:** Watch a variety of videos to help you get started with the new Seek Thermal app.

– **BROWSE FOR PRODUCTS AND ACCESSORIES:** Shop for the latest Seek Thermal gear.

Navigating with the Bottom Menu



Home icon: Select **HOME** to return to the App home page.



Media icon: Touch **MEDIA** to go to your gallery for photos & videos.



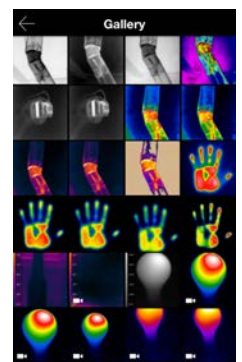
Mode icon: Touch **MODE** icon to access all features: Span & Level, Spot, HiLo and more.



Filters icon: Change your **PALETTES** while in Camera or Video mode any time here.

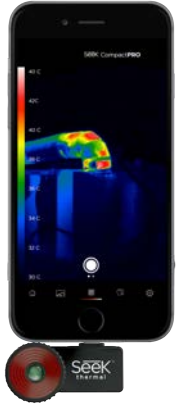


Settings icon: All **SETTINGS** and preferences are located here.



Thermal Imaging Modes

	Spot mode: Use the crosshair to pinpoint a specific temperature.
	Hi/Lo mode: Pinpoint the highest and lowest temperatures.
	Normal mode: Default mode that maximizes thermal image consistency using auto exposure control.
	Full Frame mode: Displays all temperature data for maximum clarity.
	Span and Level* mode: Easily set and lock a temperature range to display the maximum thermal information of any object or scene. CompactPRO Only*
	Threshold Above mode:
	Threshold Equals mode:
	Threshold Below mode:
	Thermal+ mode: Experimental mode that allows thermal and visual imaging side by side in real-time.

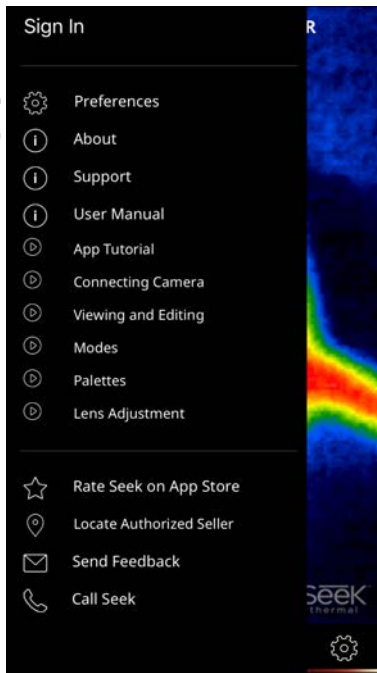


*Span and Level mode as well as emissivity control are only available with CompactPRO

Change temperature units (°C,°F,K), aspect ratio (4:3 or 16:9), and watermarks.

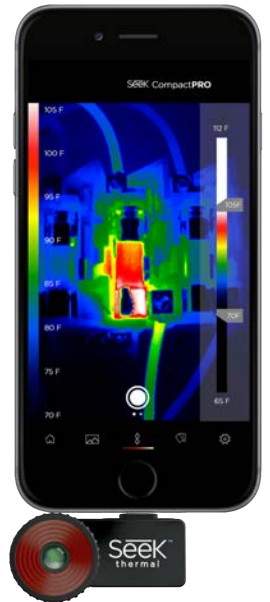
View helpful how-to videos on how to use the Seek Thermal app.

Rate our app and Contact us for more support.



Thermal Span and Level (CompactPro Only)

Easily set and lock a temperature range to display the maximum thermal information of any object or scene with a set point and range.



Emissivity Control (CompactPRO Only)



Emissivity is a material property that defines how much IR light is emitted from a particular surface. Calibrate for emissivity through four pre-defined settings to ensure accurate temperature readings and reporting.

Taking Photos & Video



Swipe left and right to switch between photo & video mode.

